

LIVING THE GREEN



MEMBER NEWSLETTER

LETTER FROM THE EXECUTIVE DIRECTOR, MIKE RILEY

RADICAL HOPE AND THE PATH TO A SUSTAINABLE FUTURE

I don't know about you, but I could use a dose of radical hope these days.

As I write, one Senator from West Virginia is blocking meaningful federal action on climate change. He is using his new found power to resist what the science tells us we must do: phase out coal as quickly as possible to avoid the worst case climate scenarios. Apparently the short-term interest of a dying industry that still dominates his state (and his source of campaign funds) is more important than the long-term well-being of our

planet and its people, even the people of his state. Sigh.

Here at the local level, we've seen similar resistance to science and doing what's right for the common good. Small but loud parts of our community have been calling on our school boards to ignore the proven efficacy of masks and vaccines to protect teachers and students. They've also called for an end to teaching the full story of how racism has shaped our state and nation. Worse yet, their tactics include catcalling and intimidation.

LETTER FROM EXECUTIVE DIRECTOR CONT'D

At an August board meeting, I watched them shout down an exhausted nurse who came straight to the meeting from her 12-hour shift at our local hospital. Double sigh.

Much to my delight, this past week I found two sources of radical hope. The first came from a new place for me: the queer community. I participated in a training with my Board led by a local consultant who spoke about the strengths and knowledge of the queer community. Near the top of their list: radical hope.

The consultant made the point that despite countless forms of oppression and exclusion over many, many years, queer people persist and thrive and contribute. Doing so has required of them a radical hope for a better future, a stance that is clear eyed about the full truths of today and simultaneously open, inquisitive and creative about what could be tomorrow. Like others who have been oppressed by the dominant culture, queer people can help us imagine and then find our way to a better future together, if we have the courage to listen and learn from their experiences.

The other source of hope came from much closer to home: the staff of The Environmental Center. As you will read in this newsletter, they are working their magic every day to translate the big idea of sustainability into

local action that makes a difference. Kicking the City of Bend's climate action plan into a higher gear. Training teachers about healthy soils and gardening. Helping the Bend-La Pine School District develop and implement a new sustainability plan. Read on for details.

All this reminds me of the importance of our motto here at TEC: "Local change. A world of difference." Meaningful change starts at home. That change requires that we do our part locally to reduce emissions, and then demand the additional, system-scale action needed from higher up the food chain. That change requires organizations like TEC to get uncomfortable, to include and learn from all voices--queer people, Native people, people of color, people with disabilities--so we can collaborate on new paths to a just and sustainable future. And that change requires us to work with and learn from those we may at times disagree with, for they too are part of our community.

Thank you for supporting us as we do this work. Together, I am radically hopeful that we can imagine and create a just and sustainable future.



Mike Riley, Executive Director

SCHOOL DISTRICT SUSTAINABILITY UPDATES

Kudos to Bend-La Pine School District for starting this school year off strong!

The 2020-21 school year was a challenge to say the least. Sustainability took a back seat role in classrooms as teachers focused on students and safety protocols, but big picture planning was still in session. A sustainability committee of 12 district members, led by The Environmental Center's Education Director Jackie Wilson, worked for seven months to update a new Sustainability Plan for the district. The plan outlines 15 goals in the following focus areas: Education; buildings and operations; transportation; and materials management. This plan will guide the district to develop measurable goals, accountability tools, and new sustainability initiatives.

Since school resumed in September, we are glad to report many successes. A new high school opened with well-designed waste stations located throughout, and we've resumed composting at two schools and started composting at the Bend High Commissary kitchen.

Construction is underway for a new cafeteria at Jewell Elementary School which will have grant-funded solar panels. And we're excited to share that a new electric school bus is on its way to the transportation department — the first of its kind in Oregon, east of the cascades!

Learn more about Bend-La Pine Schools' sustainability plan at: www.bend.k12.or.us. (Search for *sustainability* in the search bar.)

WELCOME TO THE TEAM

We continue to grow! Please join us in welcoming three new faces to The Environmental Center team this fall.

Mackenzie Foley (she/her), Membership and Corporate Giving Manager

Mackenzie brings a passion for environmental and social justice work in this new role at The Environmental Center. She served as a Peace Corps volunteer in Botswana, an Americorps VISTA Team Leader in Duluth, and most recently worked as a Wilderness Therapy Field Instructor just outside of Bend. In her free time, Mackenzie can be found exploring wilderness trails with her dog, paddling one of the local waterways, or playing cribbage on one of her homemade boards.



Grace Andrews (she/her), Energy Program Coordinator and RARE AmeriCorps Member

Grace is an AmeriCorps member with Resource Assistance for Rural Environments (RARE), a program that increases capacity for cities and counties across Oregon to tackle community-based projects. She recently graduated from Colby College, where she enjoyed working with the writing center and the outdoor orientation program for first year students. When not at work, Grace can be found hiking, paddling, skiing, or curled up with tea and a book.



Adrienne Atkins (she/her), FoodCorps Service Member

FoodCorps is an AmeriCorps organization that connects kids to healthy food through hands-on learning, healthy school lunches, and a schoolwide culture of health. Through her placement at The Environmental Center, Adrienne is busy teaching kindergarten, fourth and fifth grade students; supporting school garden development plans; and delivering weekly fruit and vegetable tastings at M.A. Lynch Elementary School in Redmond.



FIRST STEPS TOWARD A DESCHUTES COUNTY ENERGY PLAN



We're excited to share that Grace, introduced above, is helping to develop a community energy plan for Deschutes County! There are a variety of steps involved in this process, including researching the types of energy Deschutes County uses and in what ways. Grace is listening to and learning from other communities in Oregon, which will inform a plan for Deschutes County and the development of a best practices toolkit for energy planning in rural Oregon.

This is important work, considering 27% of households in Deschutes County are energy burdened — meaning six percent or more of household income is spent on energy costs. Recognizing this, Grace's outreach will focus on identifying energy problems and potential solutions. As Grace begins to coordinate community-led discussions about local energy production and resilience in Deschutes County, you can get involved by emailing grace@envirocenter.org.

BOARD OF DIRECTORS:

Lisa Seales - *President*

Glenn Van Cise -
Vice President

Kevin Doner - *Secretary*

Steve Rooney - *Treasurer*

Diane Dedrick
Emily Dougan
Allen Engle

Peter Geiser

Dave Howe

Diana Lemus

Michael McLandress

Don O'Brien

Jennifer Hoffmann

STAFF:

Udara Abeysekara
Rethink Waste

Grace Andrews

The Energy Challenge

Adrienne Atkins

FoodCorps

Neil Baungard

The Energy Challenge

Priscilla Calleros

Events & Outreach

Mackenzie Foley

Membership Manager

Becca Gilbert

Sustainability Educator

Lindsey Hardy

Waste & Energy Director

Geneva Mayall

Sustainability Educator

Tim Page

Annual Fund Manager

Marianne Pyott

Business & Facility Manager

Mike Riley

Executive Director

Denise Rowcroft

Garden Educator

Lauren Williams

Associate Director

Jackie Wilson

Youth Education Director

2021 WINNERS ANNOUNCED!

sustainability awards

an environmental center event 

CONGRATULATIONS TO THE WINNERS WHO WERE RECOGNIZED ON THURSDAY, NOVEMBER 4TH.

Bend Bikes, Well Rooted Farms, and Kôr Community Land Trust.

Every two years, The Environmental Center hosts this event as a way to celebrate businesses, organizations and individuals who are helping to shape communities that meet human needs equitably, live within our planet's ecological limits, and build a prosperous economy for all — without compromising the ability for future generations to do the same.

This year, we also featured an engaging discussion with Central Oregon youth leaders who are helping to advance a healthier future.

Did you miss the live event? A recording of the 2021 Sustainability Awards is now available. Learn more about this year's award recipients and view the recording at envirocenter.org/SustainabilityAwards.

NOVEMBER GREEN DRINKS CELEBRATES NATIVE AMERICAN HERITAGE MONTH

November is a time to celebrate rich and diverse cultures, traditions, and histories and to acknowledge the important contributions of Native people. This month, also referred to as American Indian and Alaska Native Heritage Month, is an opportune time to learn about and support our tribal communities in present-day Central Oregon. To start, visit the Museum at Warm Springs. Our staff learned a lot by visiting the museum this summer.

On November 14th, we held a Green Drinks outing at Smith Rock State Park to learn about and reflect on Indigenous stories. If you missed it, here are a few ways you can participate at any time:

- Read *Legends of the Northern Paiute: As Told by Wilson Wewa*. This book shares 21 Northern Paiute legends, as told by Wilson Wewa, a spiritual leader of the Warm Springs Paiute.
- Support local business *Sakari Farms/Sakari Botanicals*, owned by Spring Alaska Schreiner. You can purchase food, tea, skin care items, and more at sakarifarms.com.



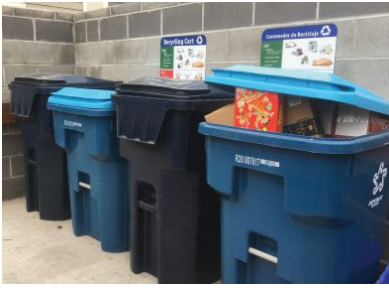
EDUCATORS LEARN ABOUT SOIL HEALTH THROUGH HANDS-ON WORKSHOP

In October, we teamed up with the Deschutes Soil & Water Conservation District and Bend Pollinator Pathways to run a Soil Health for School Gardens workshop.

Seventeen teachers from Redmond, Terrebonne, Prineville, Sunriver and Bend joined us in Redmond for this workshop. We learned about the four principles of soil health, native pollinator plants and how to engage students in soil studies. Then we walked over to the StepUp school garden for dinner and finished up by doing some hands-on soil amendment work.

Thanks to grant funding, teachers left with native pollinator plants, cover crop seeds, and a \$200 stipend to purchase soil amendment materials for their school gardens.

Check out a recording of the presentation on our blog!



RETHINK WASTE

Deschutes County has over 4.3 million visitors annually! That's a lot of extra people who produce waste and may have different recycling habits. There are many things you can do to reduce waste in your space and we can help.

Rethink Waste Project is recruiting hotels, AirBnBs, resorts and any other visitor lodging sites interested in participating in our Tourism Pilot. Participating sites will receive consultation and implementation support from our team to enhance recycling, composting, and other waste related education and infrastructure. **Interested? Email udara@envirocenter.org** to participate in this pilot project!

The Tourism Pilot is informed by several focus groups with folks in the tourism industry as well as key takeaways from the Multifamily Housing Pilot we wrapped up earlier this year.

Interested in improving sustainability at a property you manage, but unable participate in the pilot? Visit rethinkwasteproject.org/propertymanager for tips and ideas you can implement today!

ADVOCATING FOR CHANGE

Exciting news! The City of Bend's Environment and Climate Committee, co-chaired by staff member Neil Baunsgard, has selected the following six implementation priorities for Bend's Community Climate Action Plan (CCAP):

- Provide 100% renewable electricity to the community through the grid
- Create revolving loan funds to finance renewable energy and energy efficiency projects
- Participate in code update processes and vote for advancing energy efficiency in codes
- Develop a home energy score program
- Develop an outreach and educational program about food waste prevention and diversion
- Improve recycling at multifamily residences

Adopting the CCAP was a community-driven process, and your involvement today is just as important as ever to make sure these priorities and strategies get implemented. Keep emailing Bend City Councilors urging them to staff and fund these priorities. And tune in to future committee meetings to learn more about this process!

ACTION ALERT: Do you want to see improvements to biking, walking and transit infrastructure?

Bend voters approved a Transportation Bond in the last election to help fund many new transportation projects we support over the next 20 years. The Transportation Bond Oversight Committee (TBOC) is now bringing a prioritized list of projects to Bend City Council to schedule in the first five years of implementation.

If you want to see safety, walking and biking projects prioritized, send comments to council@BendOregon.gov. Learn more about the projects at bendoregon.gov (search for *TBOC* when you land on the homepage).

Local elected officials, community leaders and advocates gathered earlier this month for an informative electric bike ride throughout Bend. The ride highlighted the many benefits of e-bikes, while emphasizing the importance of good infrastructure for safe bicycling.

Thanks to Oregon Environmental Council, Bend Electric Bikes, Bend Bikes, and Commute Options for partnering with us to organize this meaningful event.



16 NW Kansas Ave
Bend, Oregon 97703

541-385-6908
info@envirocenter.org

envirocenter.org



LIVING THE GREEN

MEMBER NEWSLETTER

EVENTS IN OUR BACKYARD

December 1, 11:00 am

Working in Indian Country

Training for non-tribal members to glean helpful tips on culturally responsive ways to engage with tribes in the Pacific Northwest. Hosted by Willamette Partnership.

December 2

Essential, a Film Premiere

A new film from Oregon Natural Desert Association and an update on their conservation progress this year.

December 2, 11:45am

Empowering Families Luncheon

Support Latino Community Association's mission to empower immigrant families to thrive.

December 2, 3:30pm

Project Learning Tree Workshop

A free workshop for formal and non-formal Oregon educators! Participants will look at examples of how Project Learning Tree activities can support students' learning of the Tribal History/ Shared History Curriculum (SB13).

December 3, 12:00pm

Cost Effective HVAC Solutions

A virtual lunch and learn session from Earth Advantage. Explore cost effective solutions to meet the new Oregon codes in the area of HVAC. Designed for builders and contractors.

December 4 and 18, 10:30am

Winter Wonderland Family Program

Join Sunriver Nature Center & Observatory for a nature hike and crafts to kick off winter.

VIEW MORE EVENTS AT [ENVIROCENTER.ORG](http://envirocenter.org).

February 18-19

Mountainfilm on Tour in Bend

We're excited to welcome you back to The Tower Theatre for Mountainfilm on Tour in Bend - a fundraiser for The Environmental Center!

Featuring two unique shows with different films, an amazing raffle with local prizes, AND a virtual viewing option for folks who aren't able to attend in person.

Keep an eye out in January for ticket information. Members will receive a discount code to this inspiring event.

You guessed it! The in-person event is subject to cancellation based on the trajectory of COVID-19. If this occurs, ticket-holders will receive virtual access.



THANK YOU FOR YOUR SUPPORT!

VISIONARIES - \$10,000+

ARIA Foundation
EarthStrong Fund of The Oregon
Community Foundation
Hollis Fund of The Oregon Community
Foundation
Jill Current
NewSun Energy
Pacific Power
Samantha Richardson
Zero Energy Project

CHAMPIONS - \$5,000 - \$9,999

Allen Engle and Traci Clautice-Engle
Casey Family Fund of Oregon
Community Foundation
Central Oregon Pediatric Associates
Lay It Out Events
Mt. Bachelor
Roger Worthington
Strictly Organic Coffee Company
Trainyard Tech, LLC

LEADERS - \$1,000 - \$4,999

Barbara Scott
Bend Craftsmen Company
Brooks Resources
Capstone CPAs
Cascade Disposal
Cascade Financial Strategies
Central Oregon Association of Realtors
Central Oregon Beekeeping
Association
Central Oregon Radiology Associates
Cindy and Larry Murphy
CLEAResult
Cort and Tonya Vaughan
David Hall and Nancy Hall
E2 Solar, Inc.
El Sancho
Elizabeth D Warriner
Elliott Family Charitable Fund at
Schwab Charitable
First Interstate Bank
Fran McCabe for Charity
Fresh Off The Grid
Green Intentions, LLC
Henry Daniels-Koch
Hydro Flask
Jen and Alec Hoffmann
Jim and Dory Delp
Kathleen and Bruce Ronning
Lonza
Machamer Family Charitable Leader
Unitrust

Maggie Putnam Studio
Malcolm and Joan Buxton
Mary Fay
MGM Law Firm, LLC
Miller Lumber
Peter Geiser and Maureen Sweeney
Portland General Electric Peggy and
Bob Fowler Fund of Oregon
Community Foundation
Saginaw Sunset
Sally Russell
Skjersaa Group at Duke Warner Realty
Stemach Design & Architecture
Stephen Pool
The Bulletin
The Caliban Fund of Oregon
Community Foundation
The Gear Fix
The George Backer Family Foundation
The Hooter Fund II of Oregon
Community Foundation
The Mark and Margy Fund
The Source Weekly
Thomas and Phillis Temple
Thomas and Sally Foster
Toby and Michel Bayard
Tod Wooldridge and Leslie Blok
Van Cise Family Fund of the Oregon
Community Foundation
Ward Family Fund of Oregon
Community Foundation
Whole Foods Market, Bend

ADVOCATES - \$250 - \$999

10 Barrel Brewing
Agricultural Connections
Bear Creek Storage
Ben & Jerry's
Bend Electric Bikes
Bend Radio Group
Bethany Graham
Betsy Lamb and Ann Havill
Bill and Pam Fisher
Bo Bonotto and Jerome Colonna
Brad and Martha Hinman
Bryn Hazell
Candy and Curt Baungard
Carol Woodard-Kozimor and
Jeffrey Kozimor
Cascade Business News
Cascade Natural Gas Corporation
Central Electric Cooperative, Inc.
Central Oregon Latino Partnership
Program
Cheryl Goldberg

Chockstone Climbing Guides
Crow's Feet: A Mountain Collective
Dave Howe and Barb Smiley
David Newbold
David Sailors
Denise Torres
Deschutes Brewery
Deschutes Surgery Center
Diana Fischetti and Andy Polanchek
Diana Lemus and Jason Bagby
Diane and David Dedrick
Dorothy Wylie
Dr. Patrick Conner
Dudley's Bookshop Cafe
Eleanor Robison
Elisa and Chris Cheng
Ellen and Charles Kearns
Emily Dougan
Energy Conservation Insulation Co.
Eric Decker
Fred and Martha Betz
Gary and Vikki Hickmann
Gillian Ockner
Gregory Mein
Guild Mortgage
James Mein
Jan and Greg Gifford
Janice Allen
Jerry and Christine Barnes
Joe and Judy Meredith
Kara Allen
Kathi Neilson
Ken Brinich
Kevin and Jennifer Lair
Kevin Doner and Kori Sparks
Kimberly Smith
Laura and Ron Fritz
Laurel and Win Francis
Laurence Weinberg
Lewis and Sylvia McFarland
Lisa Seales
Liza Pyott
Lori Lull
Lynn Hedesh
Lynn Nebus
Marcia Brelsford
Marianne Pyott
Mary Ellen Coulter
Matthew Matriciano
Mel Siegel
Michelle Adams Photography
Mike Riley and Minny Purinton
Nancy Engelhard
North Star Foundation
Ouzel Outfitters

PaintCare - Oregon
Patty and Peter Dempsey
Pepper Family Fund at Seattle
Foundation
Pine Mountain Sports
Republic Services
Richard and Virginia Rowcroft
Richard Ross
Rick and Diane Rupp Family Fund of
Oregon Community Foundation
Robert Lorenzen and Priscilla Elder
Rooney Family Fund
Samantha Weald
Savory Spice Shop
Shanna Evans
Smith Rock Climbing School
Stephen Junkins and Beth Jacobi
Susan Makris
Suzanne and Gregory Johannsen
The Gordon Family
The Stubbeman Family Foundation
The Tee Family
Tracy Glenn
Vanessa Vargas
Veronica Burnett
Wanderlust Tours
Wellness Bend
Woodridings West Trust

SUSTAINERS - \$0 - \$249

900 Wall
Aaron Poplack
Adrian Bennett
Alan Swedlund
Ali Gartlan
Alicia Hall
Alison Walker
Allison Platt
Amanda Pehrson
Amy Davidson
Amy Gilbert
Amy Harney
Amy Howard
Amy Renalds
Amy Ward
Anabel Pelham
Andy Piesh
Andy Robinson
Angela Reid
Angie Anderson-May
Ann Delach
Ann Doner
Anna Ruder
Annis and James Henson
Anya Maria Tyson
Ari Halpern
Aron Yarmo and Stephanie Marz
Backporch Coffee Roasters
Barbara and Marty Nicholas
Basim Kadhim

Beatrice and Stephen Ledyard
Bend Montessori School
Bend Pet Express
Bend Soap Company
Bend Trails
Beth Hoover
Bethany George
Betsy and John Messer
Bette Andrew and Remmal Nivens
Beverly Kropp
Bigfoot Beverages
Bill and Beverly Allen
Bill and Cindy Hull
Bill and Eileen Haas
Bob and Elizabeth Naidis
Bob Harrington
Boneyard Beer
Bonnie Lamb
Brad Grant
Brandon Adams
Brent and Patti Jacobs
Brian Durbin
Broken Top Candle Company
Byron Pittam, Marni Spitz and Sadie
Spittam
Cabooost Kombucha LLC
Callie Pfister
Carina Peterson
Carol and Dennis O'Shea
Carol and Ted Schoenborn
Carol Bunge
Carolyn Husmann
Catherine and Martin Morrow
Catherine Smith
Cathryn Chicola
Central Oregon Houseplant Exchange
& Consult
Central Oregon Locavore
Charlie and Linda Schrader-Patton
Charlie Burr
Chelsea and Dakota Gale
Cheryl and Michael Morgen
Cheryl Thomas
Chris McArthur
Christine Menefee
Christine Ott-Hopkins
Christopher Hamilton
Christopher Marney
Chuck Meyer and Laura Handy
Clay and Lori Deckert
Cloyd Robinson
Cog Wild
Connie Peterson and Dave Calvert
Cooper Morrow
Coralia and James Calomeni
Craig Randleman
Cross Country Ski World
Curtis and Barbara Ringstad
Dan and Jody De Land
Dan Youmans

Dana and John Nehl
Dani and Bert Hinkley
Daniel and Amy Brewster
Daniel Fohrman
Daniele McKay and John Nangle
Darci Palmer
Dave Rein
David and Joan Ogden
David Caplan and Cinda Strauch
David Maul
David Stranahan and Maggie
McLaughlin
David Thorn
David Warner
Deb Brewer
Deborah and Cecil Jones
Deedee and Brian Harrington
Denise Rowcroft and Jimmer Sites
Dennis and Leslie Ades
Dennis Hanson
Dennis Staines Construction
Devin Barclay
Diane and Erik Fernandez
Dianne Hardy
Dick Koning and Patricia O'Neill
Don Schuman
Don Whithead
Dorothea Sittler
Dorothy Leman and Becky Plassmann
Ed Lachapelle and Zeldia Ziegler
Ed Mierjeski and Sarah Mason
Elaine Cole
Elizabeth Doner
Ellen Mercer
Elouise and Charles Mattox
Emilie Marlinghaus
Eva and Preet Chopra
Eva Gill
Fiona Noonan
Flower Girl Farm
Focus Physical Therapy
Frank Larson
Frank Shirley
Fred Cliff
Garrett Jones
Garrett's Giving Fund
Gay Abdon
George Hara
George Myers
Gerald Kerr and Ann Wilson Kerr
Gillian Hodgen and Erik Paulsen
Gina Hardin
Graham Fox
Great Harvest Bread Company
Greg and Debra Burke
Greg Lyons
Heidi Zeimentz
Heike Williams
Helen and Jerry Freilich
High Desert Museum

Humm Kombucha
Hydaway
Ida's Cupcakes
Irene Goodnight
Irrigation Man
James and Becky Powell
James Collins
Jan and Charles Volz
Jan Hildreth
Jana Hemphill
Janet and Kenneth Lakin
Janette Haines
Jay Bauer
Jeanie and William Carmichael
Jeff and Laurel Variel
Jeff and Susan Rola
Jen Healy
Jennifer and Craig Letz
Jennifer Enna
Jeremy Fox
Jess and Evan Ludmer
Jesse Zimmermann
Jim and Judy Clinton
Joan and Bill Alles
Joanne Richter and Sara Wiener
Joe Benim
Joe Mazzarella
Joette and Gene Storm
John and Linda Fink
John Dismuke
John Kelly
John Moore
John Pitney
John Schubert
Jon Cain
Joshua Bickett
Joshua Grossman
Josie Norris
Judith Rosen
Judy and James Munro
Judy Rowe
Juliana Linder
Julie Bowers
Julie Donnelly
Kadee Mardula
Karen Allen
Karen Holm and Robert Walker
Karen Huck
Karen Kassy
Karen Levy
Karen Swirsky and Nils Eddy
Karla Proud
Karyna Grace
Kate Cahill
Kathleen Donohue
Kathleen Phillips
Kathryn Cullen
Kathryn Vordenberg
Kathryn Wood and Michael Funke
Katie Arnold

Katie Chipko and Cason McCain
Katie Ryan
Katie Sheldon
Katy Bryce and Chris Kratch
Kavi Chokshi
Kayla and Nick Rotunno
Keith and Carina Dodge
Kelsey Freeman
Kerie Raymond and Jason Tedrow
Kevin Grove
Kiley Borrevik Borrevik
Kim Ely
Kim McClain
Kim Sullivan
Kirin and Lev Stryker
Kori Richards
Kris Arnold
Kristina Pacek
Larry Katz and Kathy Baker-Katz
Laura and David Hiller
Laura and Roger Fox
Lauren and Ron Beyerinck
Lauren Bates
Lauren Lester
Laurie Segal
Leah Rutz
Leif Wiebe
Leslie Hamann
Leslie Koc
Leslie Rust
Letty Rozell
Liisa Sjoblom
Linda and Patrick Kallal
Linda Drey-Nightingale
Linda Shekerdeman and Michael George
Lindsey Grover
Lindsey Hardy
Lindsey Wreden
Lisa Hardy
Lisa Shaddox
Lisa Stano
Liz and Dave Rink
Lorene Sloper
Madeleine Stevens
Maggie Starbucks-Miller
Mara Burnell
Mare and Rick Peters
Marianne Disney
Mark Goddard
Mark McCarroll
Mark Petersen
Mark Schafer
Marty Rose
Mary Bricca
Mary Hearn
Mary Ostrander
Matthew and Valerie Martin
Maureen and John Augustyn
Meg Kinnear

Megan Blunda
Megan Myers
Meghan O'Malley
Melissa Fraizer
Metolius Climbing
Michael and Kelly Giebelhaus
Michael Graham
Michael McLandress
Michele Freeman
Mike and Betsy Tucker
Mike Buettner
Mike McCord Attorney at Law
Mike Sequeira
Mindi Larrabee
Mistilyn Gebow
Ms Romo Makes
Namaspa
Nancy Harris
Natasha Bellis
Neal Huston & Associates Architects
Ned Austin
Neil Baunsgard and Jane Ward
Newport Avenue Market
Nick Lelack and Alyssa Bennett
Nick Millar
Nicole Baumann and Matthew Douglas
Nicole O'Neill
Nicole Stock
Nicolette and Jon Swift
Outside In Bend
Outside Insights
Owen Mitz and Helen Seidler
Parr Lumber
Pat McCabe
Patricia Joslin
Patricia Smith
Paul Claeysens and Holly Hutton
Paul Krahn and Daria Wightman
Peggy Beebe
Perry Johnson and Carol Elwood
Peter and Trina Grube
Peter Perry and Toni Morozumi
Pura Vida Massage
Raymond Jones
Rebecca Kaufmann
Rebecca Loveman
Rick Dingus
Rick Miller
Robbie and Lauren Williams
Robert and Jerri Bars
Robert Currie and Elayne Logan-Currie
Robert Haase
Roberta Cranswick
Robin and Irene Vora
Robin Moats
Roger and Donnie Jewell
Ronald and Linda Meredith
Ronni Wilde
Root Down Kitchen
Rosemary Flannery

LEARN ABOUT INCLUDING THE ENVIRONMENTAL CENTER IN YOUR ESTATE PLAN.

Roundabout Books
Russ and Christina Donnelly
Ruth and Dale Anderson
Rynda Clark Donation Fund
Sabrina Lint
Sakari Farms
Sami Khoury
Sandra Thompson
Sarah Lau
Sarah Tonna
Seth and Chris Abramczyk
Shanan Kelley
Sharon Van Dusen
Shauna and Mark Quistorff
Shayla Scott
Sheila Pyott
Sheila Timony
Shelley Brower
Sherrie Pierce
Shirley Roach
Sidney and Louise Henderson
Sisters Coffee Co.
Spencer Krueger and Mary Lefevre
Spoken Moto
Stacy Koff
Stanley and Susan Shepardson
Stephanie Paddack
Steve and Marian Williams
Steve Hardy
Steve Mann
Steven Kaisner
Steven Roti and Tina Pavelic
Steven Strong
Stratton Matteson
Sue Meyer
Sue Yocom
Sunriver Brewing Company
Susan Carr
Susan Goracke
Susan Lynn and Mark Pengilly
Susan Schneider and Jonathan Starr
Susie and Dale Neubauer
Suzanne and Jeff Johnson
Suzanne and Robert Butterfield
Suzanne Lemagie
Sylvia Erdmann
Sylvia Morrison
Taco Del Mar
Taylor Mays
Teesa Felt
Tess Freeman
The Commons Cafe and Taproom
The Growler Guys
The Haven Coworking
The Peoples Apothecary
The Workhouse
Theodore and Virginia Gladu
Theresa Wadden and Mark Molner
Tim, Natalie and Owen Page
Tommy and Arielle Ocel

Toni Delano
Tozer Design, LLC
Tracy and Paul Tindle
Udara Abeysekera
Vernon Gross
Vincent and Tamara Smith
Visit Bend
Wallace and Lucia Zurakowski
Watkins-Beeman Charitable Fund
Wayne Lewis
Wendy and Alan Holzman
Wes Pyne
Wild Ride Brewing
William Clark
William L and Shari Howard
William Tweed
Wilma and Charles Campbell
Wind + The Wanderer, LLC
Yvonne Tornatta
Zak Modrell
Zechariah Heck

IN MEMORY OF

Shari Hogshead

IN HONOR OF

Kasey Brynn

GOVERNMENT

Bend-La Pine School District
Bend Park and Recreation District
City of Bend
Deschutes County Department of Solid Waste
Deschutes Soil & Water Conservation District
Oregon Department of Agriculture
Oregon Department of Education
Oregon Department of Environmental Quality

FOUNDATIONS

Gray Family Foundation
Oregon Community Foundation
Pacific Power Foundation
St. Charles Foundation
The Anjulicia Foundation
The Ford Family Foundation

PARTNER GROUPS

88.9 KPOV, High Desert Community Radio
Camp Fire Central Oregon
Central Oregon Landwatch
Central Oregon Trail Alliance
Coalition for the Deschutes
Commute Options of Central Oregon
Deschutes Land Trust
Deschutes River Conservancy
Earth Advantage Institute

East Cascades Audubon Society
Friends of Malheur National Wildlife Refuge
Habitat For Humanity
Oregon League of Conservation Voters Education Fund
Oregon Natural Desert Association
Oregon Wild
Sierra Club-Juniper Group
Sunriver Nature Center & Observatory
Trout Unlimited (Deschutes Chapter)
Upper Deschutes Watershed Council
Veg Net Bend

NON-PROFIT PARTNERS

Central Oregon Health Council
Energy Trust Of Oregon
Forth
Oregon Farm to School and School Garden Network

This list reflects donors from July 2020 to October 2021 and does not include contributions to The Environmental Center's Eco Central Capital Campaign

We are currently in the quiet phase of our Eco Central Capital Campaign to support the growth and evolution of our facility and programs.

A total of 54 donors have contributed more than \$2.3 million to support longer term investments in our work to advance climate action and sustainability for Central Oregon. Our Board of Directors and staff are deeply grateful to all who have participated in the campaign to date, and we will recognize those gifts at a later time.